

IVF NEWS

Mick Abae, M.D., F.A.C.O.G.

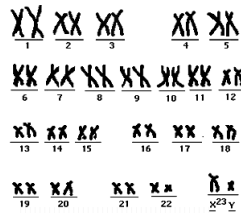
Harold F. Rodriguez, Ph.D., H.C.L.D., E.L.D.

NOVEMBER, 2004 No. 11 www.care-life.com

1-866-246-CARE(2273) info@care-life.com

PRE-IMPLANTATION GENETIC DIAGNOSIS AVOIDS MISCARRIAGES DUE TO CHROMOSOMAL ANOMALIES

Most miscarriages in women are caused by chromosomal abnormalities of the embryo; these mainly involve numerical and sometimes structural anomalies. The incidence of embryonic chromosomal abnormalities increases significantly with advancing maternal age (women ≥ 35 years of age). Chromosomal anomalies may be associated with failure to conceive in many couples who have failed various fertility treatments including In Vitro Fertilization. Although physical characteristics are helpful in determining overall embryo quality, many embryos with good to excellent appearance may be affected with numerical chromosomal abnormalities (for example, Down's Syndrome). For this reason, conventional genetic testing by amniocentesis and/or chorionic villae sampling (CVS) have been developed. These tests, however, can only be performed when pregnancy is established and is relatively advanced, as is the case with amniocentesis (16 weeks gestation); in addition, in cases with abnormal results couples are left facing a difficult dilemma. **Pre-Implantation Genetic Diagnosis (PGD)** allows chromosomal analysis using a single cell from an early embryo. Pregnancies established following the replacement of normal PGD embryos have a significantly reduced risk of miscarriage and of numerical chromosome anomalies. Since September of 2002, sixty-seven couples have been evaluated at our center for the option of PGD embryo screening for the following indications:



- › Advancing maternal age (≥ 35)
- › History of repeated miscarriages
- › Prior pregnancy with a chromosomal abnormality
- › History of repeated failed IVF attempts

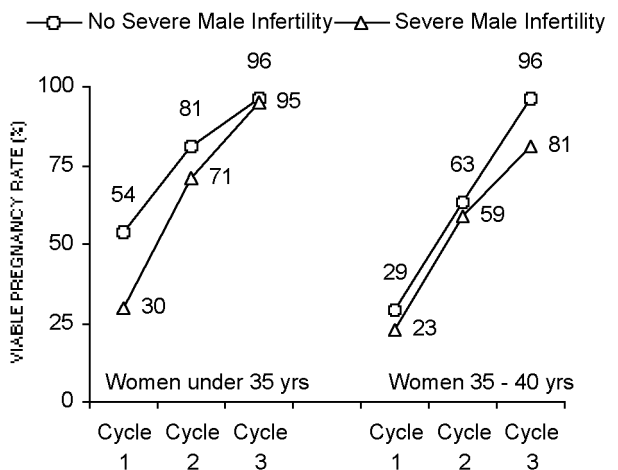


So far, 16 couples (maternal age up to 43 years), have completed PGD analysis through our center. Thirteen couples had at least one normal embryo available for transfer and six successful pregnancies have been achieved (46% viable pregnancy rate). The first live birth from our program occurred on June of 2003; to our knowledge, this was the first baby born by PGD through a South Florida fertility program. To date 4 more normal babies have been born (three baby girls and one baby boy). We are also expecting the outcome of three other ongoing pregnancies, and are happy to report that to date no miscarriages or fetal chromosomal abnormalities have been seen among patients conceiving after PGD in our center. Currently, we are also in the process of providing this state of the art technology to patients with a known family history of certain genetic conditions such as Cystic Fibrosis, and others with balanced translocation of one or more chromosomes, conditions that can have severe effects on pregnancies that are affected.



we are also in the process of providing this state of the art technology to patients with a known family history of certain genetic conditions such as Cystic Fibrosis, and others with balanced translocation of one or more chromosomes, conditions that can have severe effects on pregnancies that are affected.

CUMULATIVE VIABLE PREGNANCY AND LIVE BIRTH RATES FOLLOWING IVF-ICSI AT CARE-LIFE



Measuring the **Cumulative Pregnancy Rate** best assesses the efficacy of treatment outcomes, including IVF-ICSI. For this, the outcome of couples who continue treatments is calculated. Data from our center, 183 couples who initiated 237 treatment cycles, shows that in the vast majority of cases with up to three IVF cycles a viable pregnancy was achieved. These results are separated by presence or absence of Severe Male Infertility, defined as having less than 3 million total normal motile sperm in the ejaculate. Likewise, in 43 couples undergoing 50 cycles of IVF with donor eggs, the cumulative viable pregnancy/live birth rate after two attempts was greater than 90% (not depicted in graph).

FREE EDUCATIONAL SEMINAR: NOVEMBER 20, 2004

A patient educational seminar is scheduled for Saturday, November 20th, 2004 (10:00 am) at the Westin Diplomat Spa and Resort in Hollywood. Please RSVP by November 15th at 1-866-246-CARE, or at info@care-life.com. **PARTICIPANTS ARE ELIGIBLE FOR A FREE CONSULT WITHIN 45 DAYS.**

IVF PLUS: NEW FINANCIAL OPTION

IVF PLUS, a new IVF program available only at our center, offers qualifying couples a complete IVF treatment cycle inclusive of all injectable ovarian stimulation medications and laser assisted hatching (\$ 9,990). **IVF PLUS represents savings of 30% or greater, when compared to standard costs of IVF as offered by most clinics.**

NEW FACILITY NEARS COMPLETION



Anticipated to open in December 2004, our new offices, laboratories and outpatient surgi-center will be located at 201 North Pine Island Road, in Plantation. These state of the art facilities will be equipped with the latest in equipment for minimally invasive surgery, hysteroscopy and assisted reproduction laboratories. For questions about our center and services, visit us on the web at www.care-life.com, write to info@care-life.com, or call (toll-free) 1-866-246-CARE.



C.A.R.E.-L.I.F.E.
3200 South University Drive
Suite 4372
Davie, FL 33328

PRSRT STD
US POSTAGE
PAID
FT. LAUDERDALE, FL
PERMIT 2855

FREE EDUCATIONAL SEMINAR
(Breakfast will be provided)
See inside for details